



FULTON
INDUSTRIAL BLVD

CAMPBELLTON RD SW

DEVELOPMENT OPPORTUNITY
0 Campbellton Rd SW
South Fulton GA 30336



COMMERCIAL
ATLANTA CLASSIC

Phyllis Minter

770.256.8168

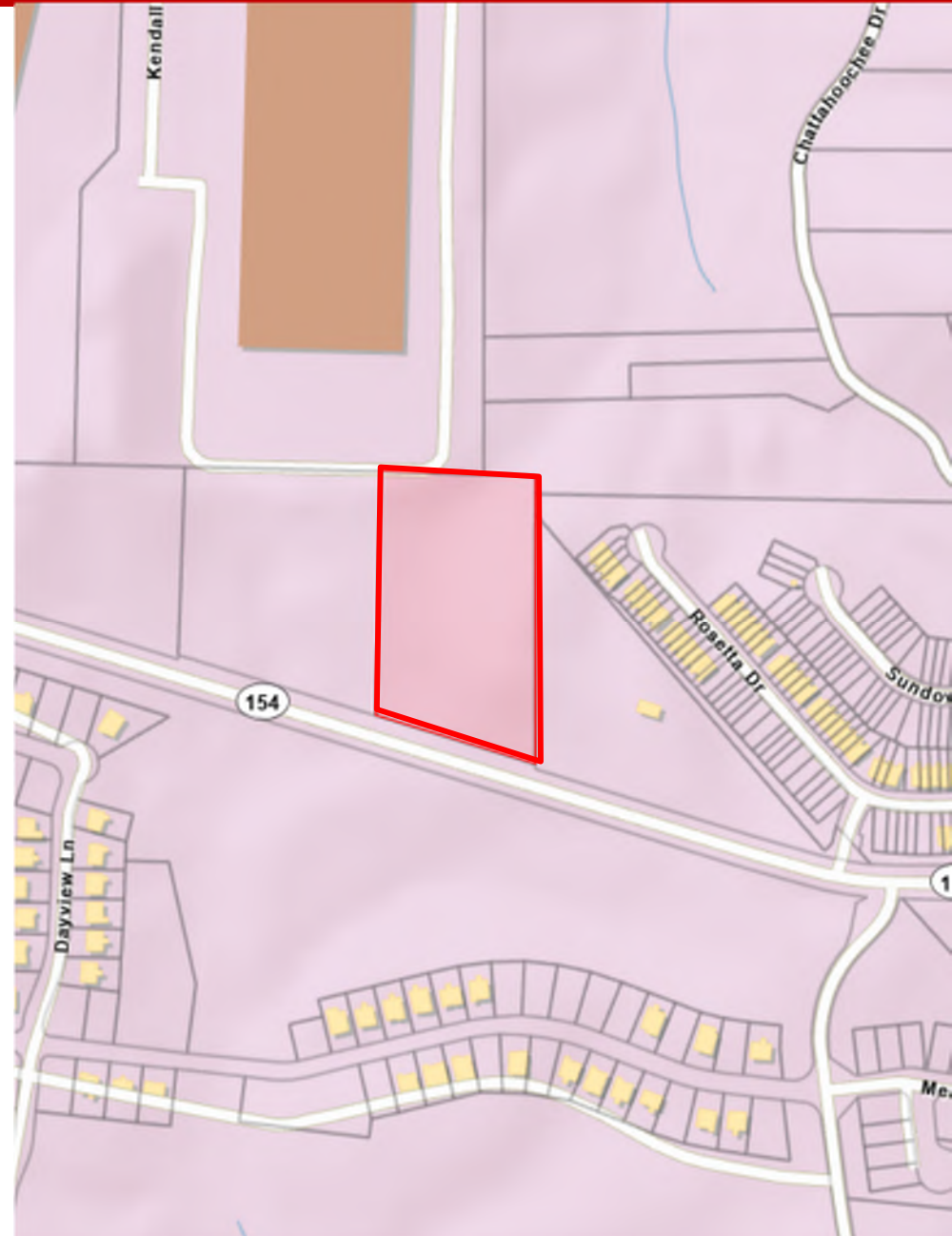
pminter@kwcommercial.com



PROPERTY OVERVIEW

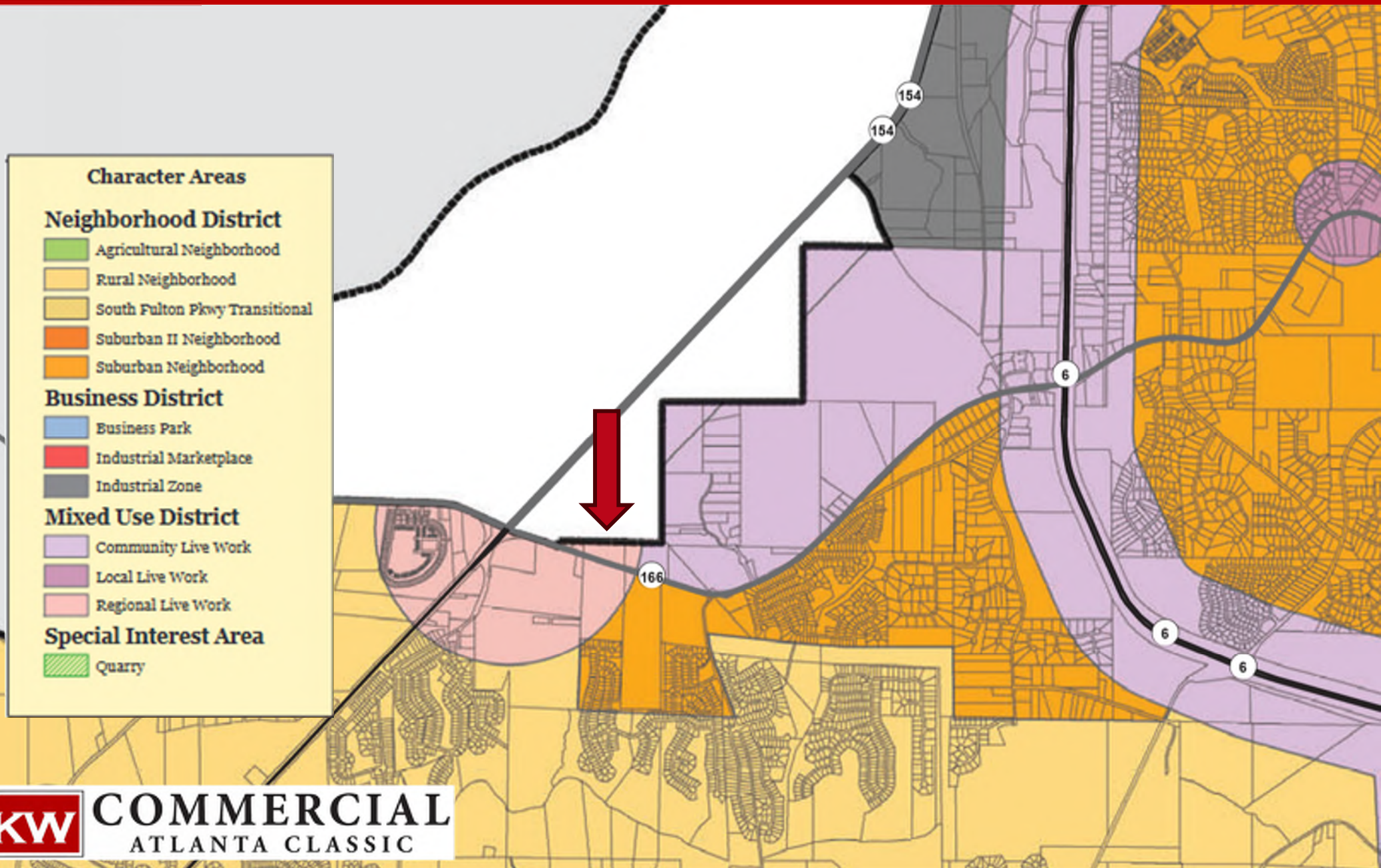
- o +/- 4.90 Acres
- o City of South Fulton – Fulton County
- o Parcel ID: 14F0148 LL1247
- o Zoned Single Family ([Link to Code](#))
- o Overlay District: Sandtown ([Link to Code](#))
- o Future Land Use: Mixed Use – Regional Live Work
- o +/- 388 ft Frontage on Campbellton Rd SW
- o Excellent Access to Fulton Industrial Blvd & Camp Creek Parkway
- o Less than 10 miles to the I-285
- o Less than 15 miles from the Hartsfield Jackson International Airport

Offering Price - \$890,000





FUTURE LAND USE MAP





SUBMARKET AERIAL

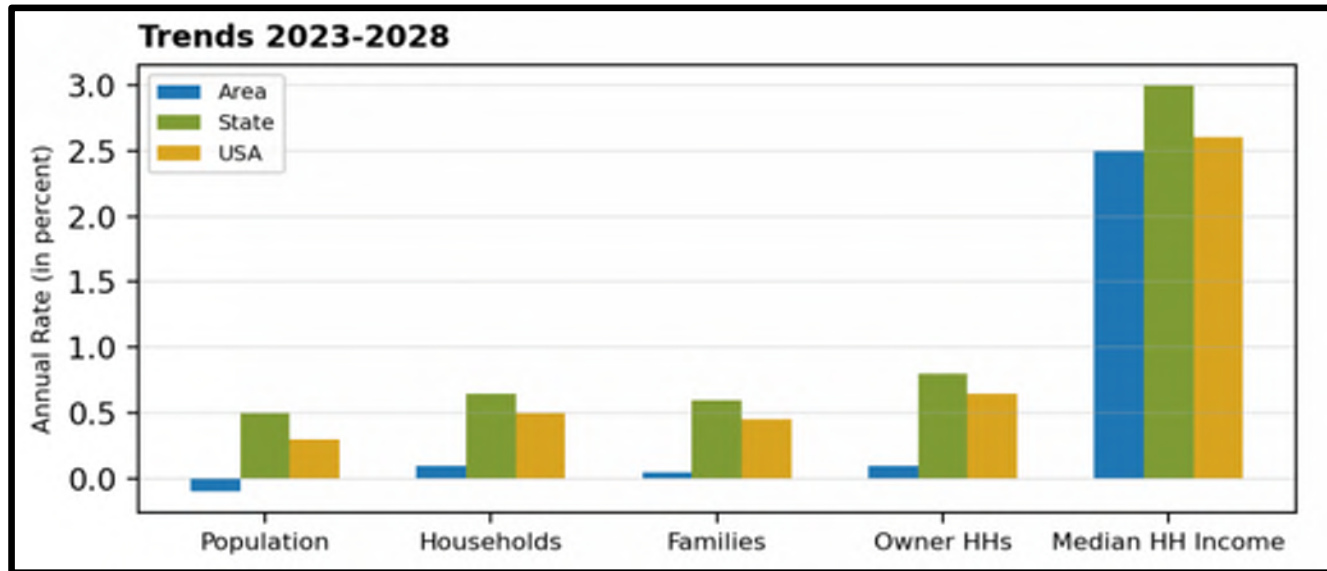
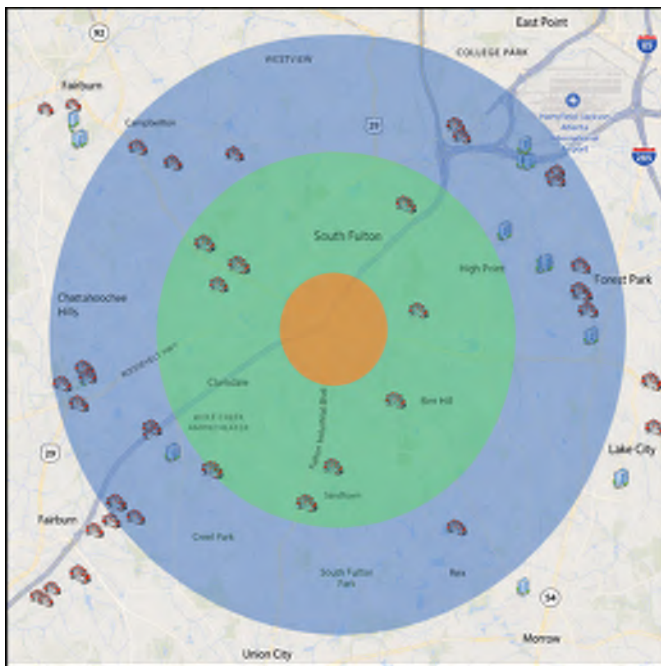
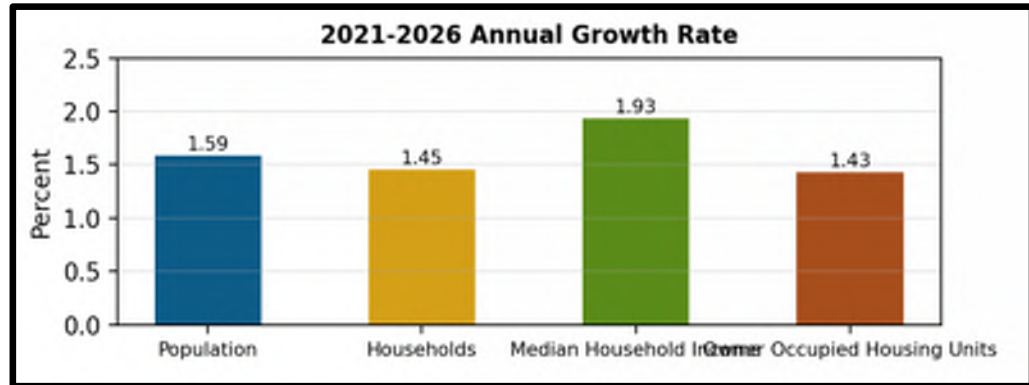




DEMOGRAPHICS

OCCUPATION BY EARNINGS

The five occupations with the highest number of workers in the market are displayed by median earnings. Data from the Census Bureau's American Community Survey.



	Population	# of Households	Avg Household Income	Median Age
1 Mile	9,522	3,500	\$78,682	33
1-3 Miles	68,168	26,077	\$83,713	33
3-5 Miles	157,992	62,264	\$88,030	34



Phyllis Minter

Associate Broker

P.A. Minter Associates power by
KW Commercial Atlanta Classic

770.256.8168

pminter@kwcommerical.com

